

FT GATLIN VILLAGE

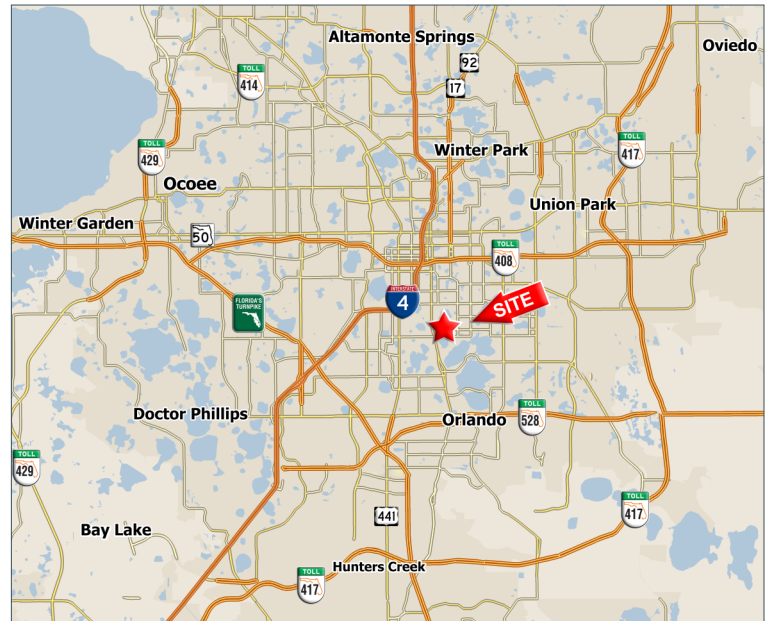
4401 S. Orange Avenue, Orlando, FL 32806



PROPERTY HIGHLIGHTS

- Great neighborhood center opportunity!
- Center recently renovated
- This center allows its tenants to cater to both, a large residential and daytime population.
- Located at a heavily trafficked intersection.
- Strong household income in the immediate area.
- This center is ideal for any and all retail and professional office uses.
- Traffic Counts:
 - 42,000± VPD on Orange Ave.
 - 15,300± VPD on Holden Ave.

Demographics	1-Mile	3-Mile	5-Mile
Population	7,225	115,539	279,083
Average HH Income	\$86,524	\$62,697	\$58,952
Daytime Population	9,031	154,415	436,218



Jessica Moore
941-979-0727
jessica@blurockcommercial.com

3408 S. Orange Ave.
Suite B
Orlando, FL 32806
www.blurockcommercial.com

FT GATLIN VILLAGE

4401 S. Orange Avenue, Orlando, FL 32806



#	Tenant	SF
4721-37	Gatlin Hall	4,738
4741	Mochinut	1,562
4745	Available	1,709
4749	Available	1,840
4753	Available	2,283
4757	The Porch at Gatlin	4,058
75	High End Nail Salon	1,940
101-103	Salon Suites	5,658

#	Tenant	SF
105	Salon Suites	2,842
107	Definition Bridal	1,397
109	Available	1,383
111	Vet Clinic	2,109
113-17	Hardcore Fitness	4,319
118	Available	1,394
119	Available	2,760
4761	Fran Prop manage.	683

#	Tenant	SF
4765	Just 4 Dogs	683
4769	Flow Barber	683
4773	Chiropractor	683
4777	Raptors Catering	683
4781	ButterCrust Pizza	683
4785	Tax Office	683
4789	Smiths Homemade	683
4793-97	Brazas	1,357



Jessica Moore
 941-979-0727
 jessica@blurockcommercial.com

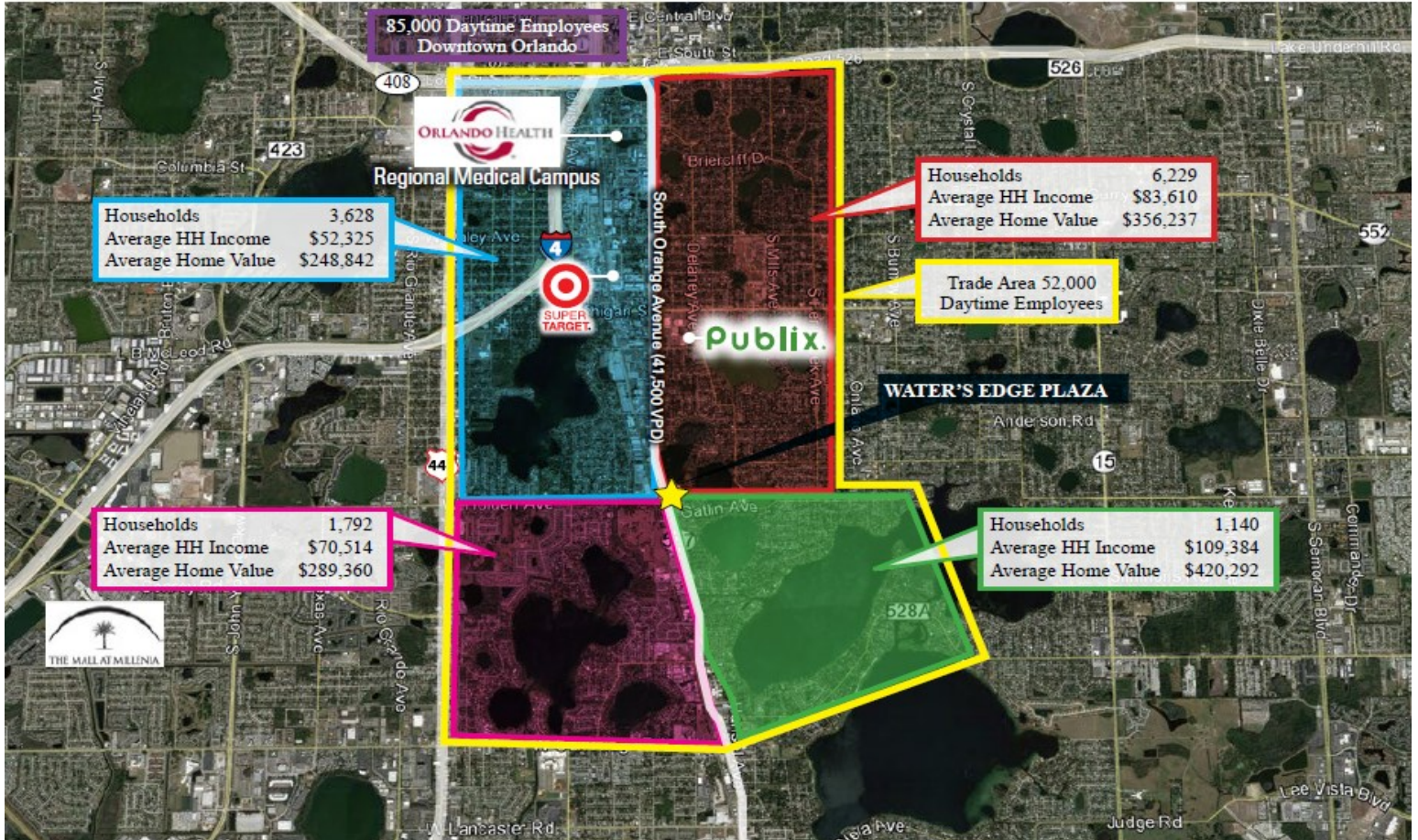
3408 S. Orange Ave.
 Suite B
 Orlando, FL 32806
 www.blurockcommercial.com

FT GATLIN VILLAGE

4401 S. Orange Avenue, Orlando, FL 32806



Trade Area Demographics



Jessica Moore

941-979-0727

jessica@blurockcommercial.com

3408 S. Orange Ave.

Suite B

Orlando, FL 32806

www.blurockcommercial.com

