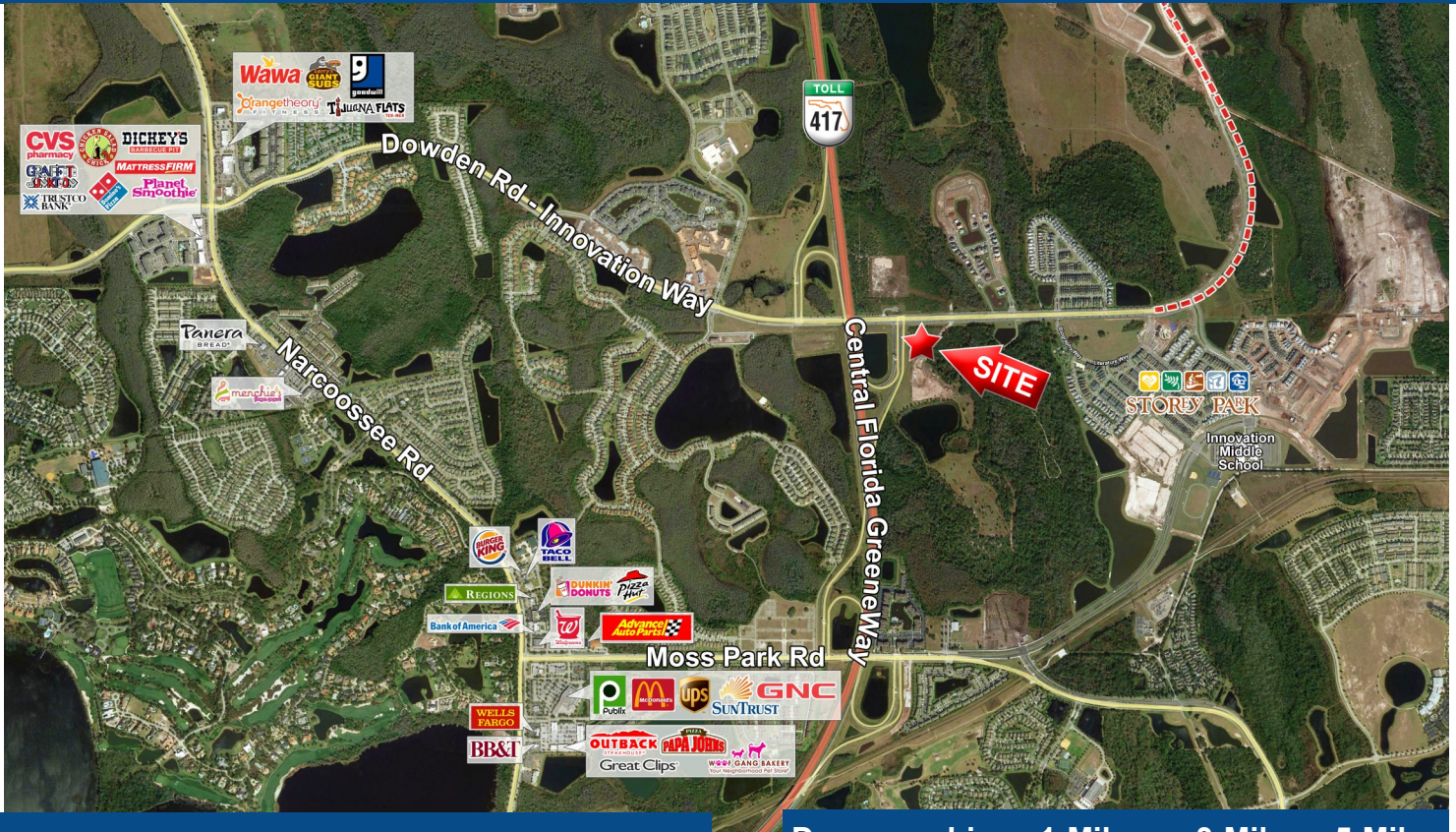


# SHOPPES OF STOREY PARK- ORLANDO, FL

## RETAIL FOR LEASE

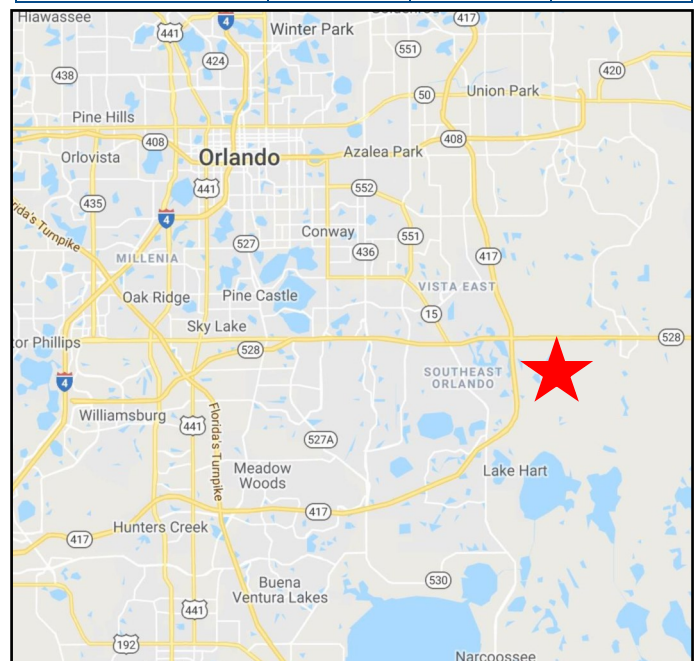
Dowden Rd & 417 Orlando, FL 32832



### PROPERTY HIGHLIGHTS

- Join New Publix Grocer Center– 1,400-9,800 SF. available
- Affluent High Growth Market
- Near the 417 bypass & New Orlando Health Hospital
- Cotenant with grocery store
- 5/1,000 parking spaces
- Located at Dowden Road & 417
- Near many new residential developments

Demographics	1-Mile	3-Mile	5-Mile
Avg. HH Income	\$86,967	\$94,425	\$80,730
Population	4,347	25,501	60,247



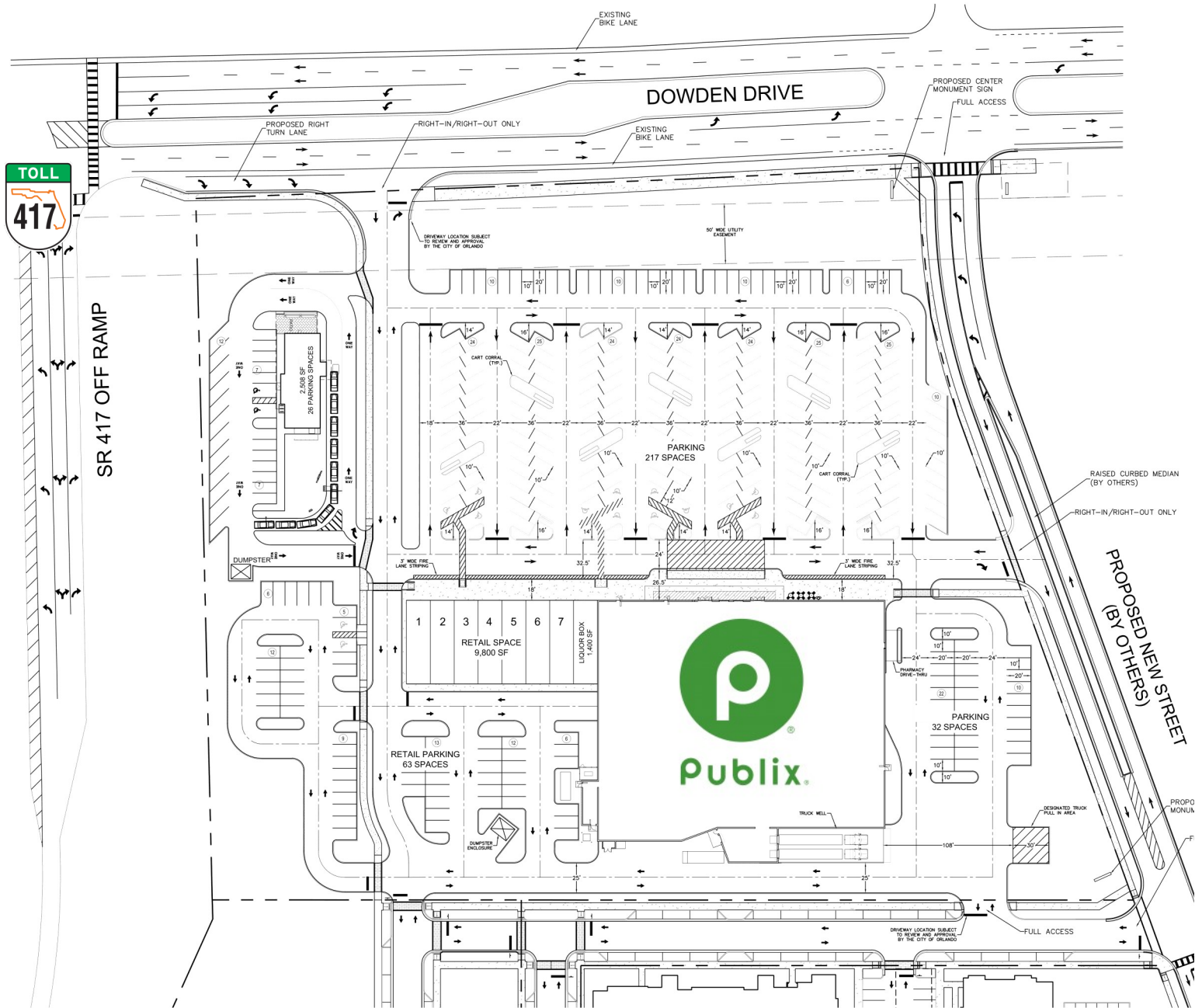
Heather Coons  
 305-283-1521  
 heather@blurockcommercial.com

3408 South Orange Ave.  
 Suite B  
 Orlando, FL 32806  
 www.blurockcommercial.com

# SHOPPES OF STOREY PARK- ORLANDO, FL

## RETAIL FOR LEASE

Dowden Rd & 417, FL 32832



Heather Coons

305-283-1521

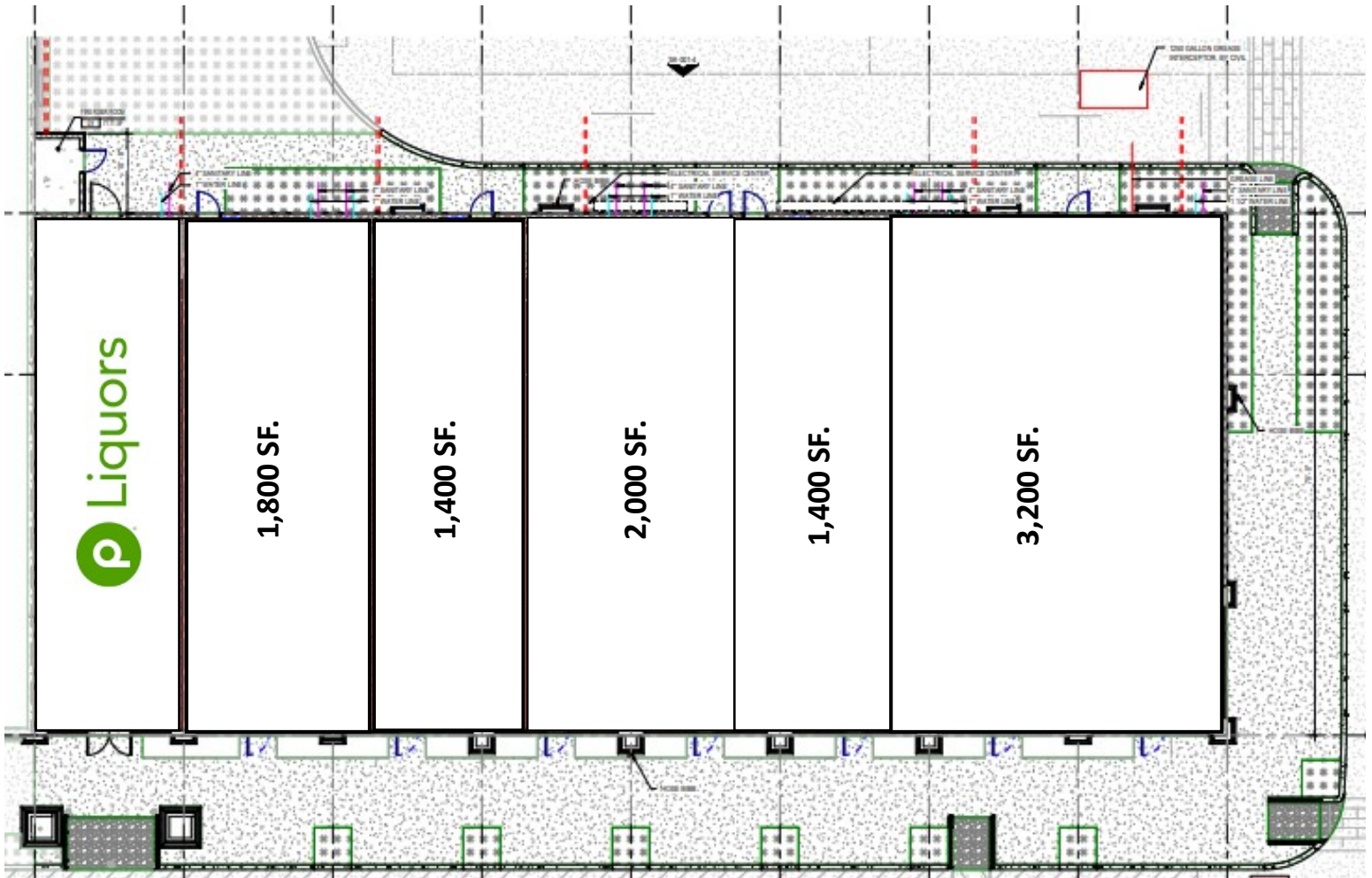
heather@blurockcommercial.com

3408 South Orange Ave.  
Suite B  
Orlando, FL 32806  
www.blurockcommercial.com

# SHOPPES OF STOREY PARK- ORLANDO, FL

## RETAIL FOR LEASE

Dowden Rd & 417, FL 32832



Heather Coons

305-283-1521

heather@blurockcommercial.com

3408 South Orange Ave.  
Suite B  
Orlando, FL 32806  
www.blurockcommercial.com